

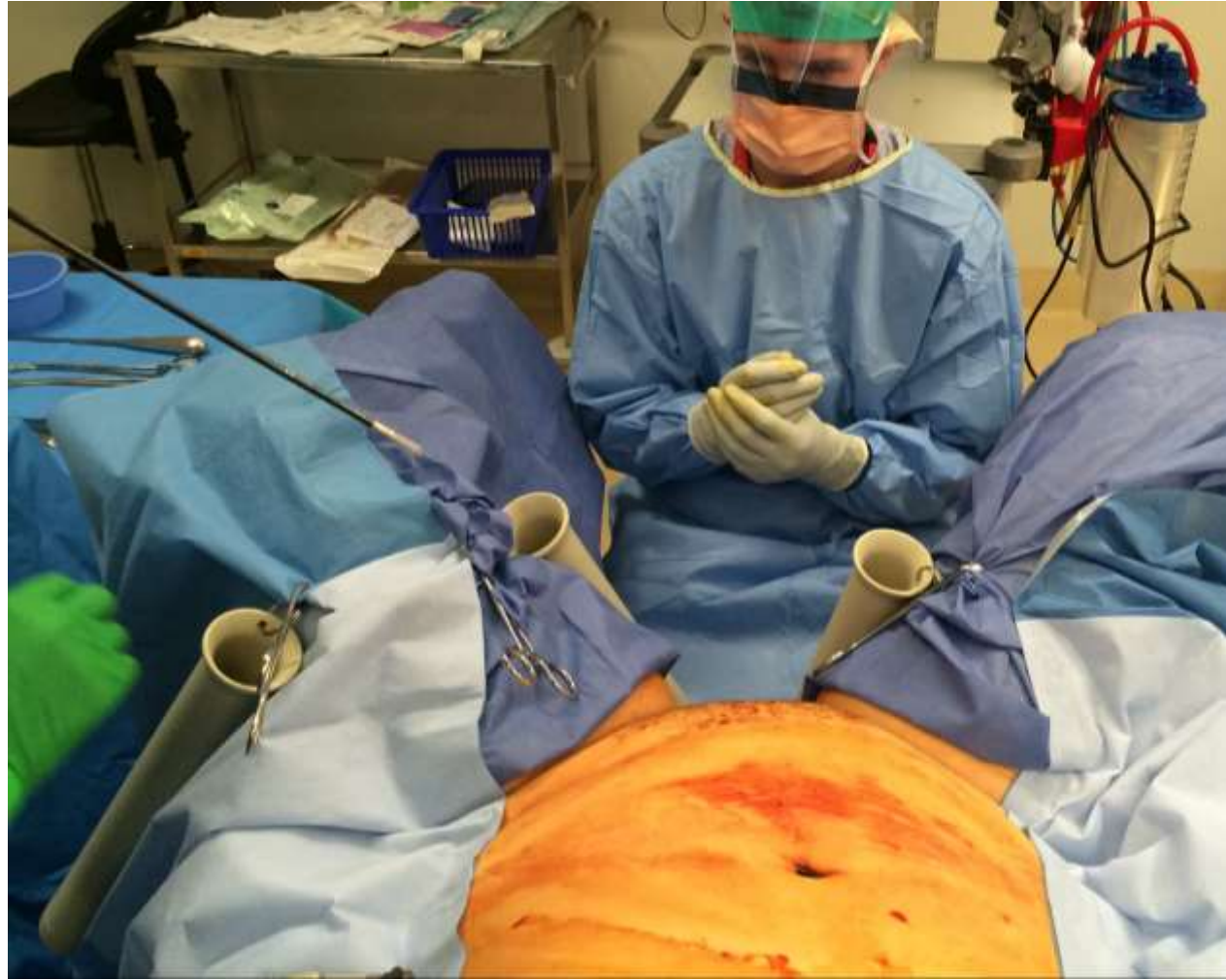
Laparoscopic Hysterectomy

Set up

Set up for TLH

- [Operating table](#)
- Adjustable stirrups – watch hip bend
- Arms by the side & [Bean bag](#)
- Return electrode
- Surgeon involved in positioning – feedback (“antibiotics in”)
- **Side drapes**
- **Quivers (2 left leg, 1 right leg)**
 - Supply of light, camera, gas
 - Sucker (R leg)
 - Energy (L leg)
- Instruments: Graspers (3), monopolar scissors (1), Ligasure (1)
- Monitors (between legs, slave)
- Angle of legs
- Verress Needle
- Extra’s trolley
- Dim room lights
- Port placement (primary – secondary)
- [Stand tall and high](#)

Positioning of equipment



Set up for TLH

- [Operating table](#)
- Adjustable stirrups – watch hip bend
- Arms by the side & [Bean bag](#)
- Return electrode
- Surgeon involved in positioning – feedback (“antibiotics in”)
- Side drapes
- Quivers (2 left leg, 1 right leg)
 - Supply of light, camera, gas
 - Sucker (R leg)
 - Energy (L leg)
- Instruments: Graspers (3), monopolar scissors (1), Ligasure (1)
- **Angle of legs**
- Monitors (between legs, slave)
- Verress Needle
- Extra’s trolley
- Dim room lights
- Port placement (primary – secondary)
- [Stand tall and high](#)

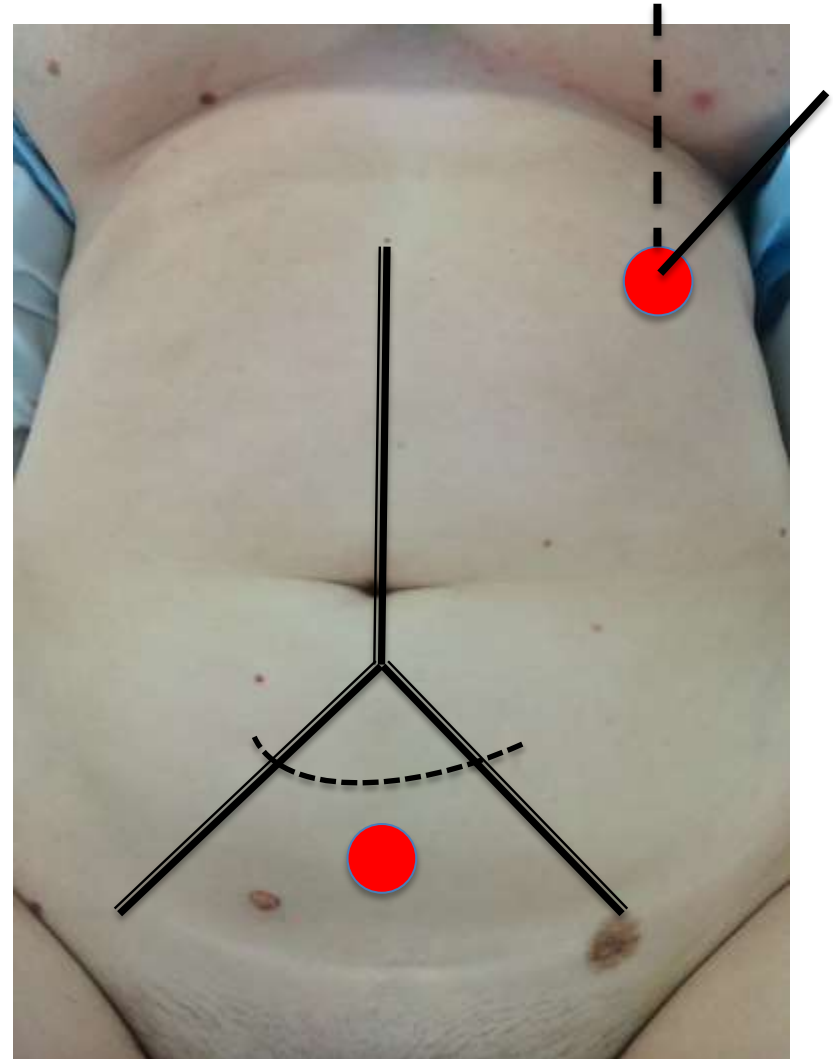
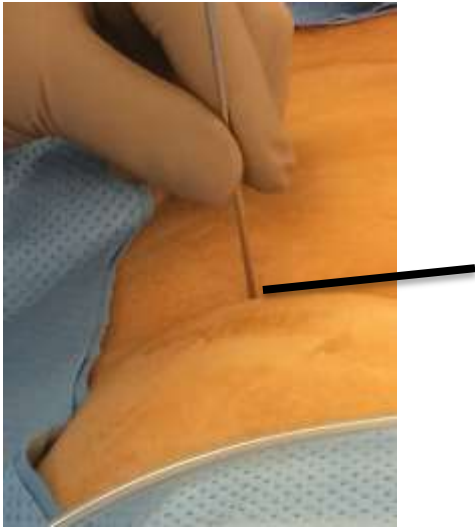


Set up for TLH

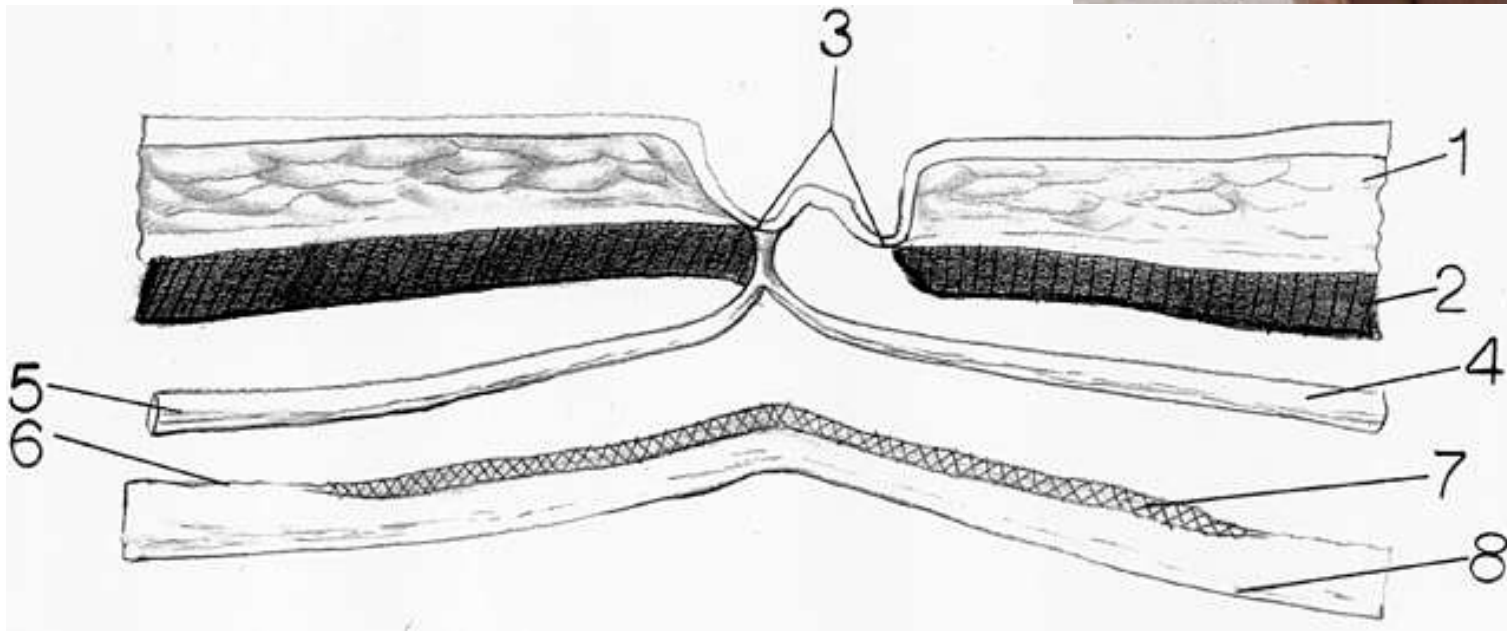
- [Operating table](#)
- Adjustable stirrups – watch hip bend
- Arms by the side & [Bean bag](#)
- Return electrode
- Surgeon involved in positioning – feedback (“antibiotics in”)
- Side drapes
- Quivers (2 left leg, 1 right leg)
 - Supply of light, camera, gas
 - Sucker (R leg)
 - Energy (L leg)
- Instruments: Graspers (3), monopolar scissors (1), Ligasure (1)
- **Angle of legs**
- Monitors (between legs, slave)
- Verress Needle
- Extra’s trolley
- Dim room lights
- Port placement (primary – secondary)
- [Stand tall and high](#)

Primary port entry

- Umbilicus
- Palmers point
- Suprapubic area
- Open (Hasson technique)

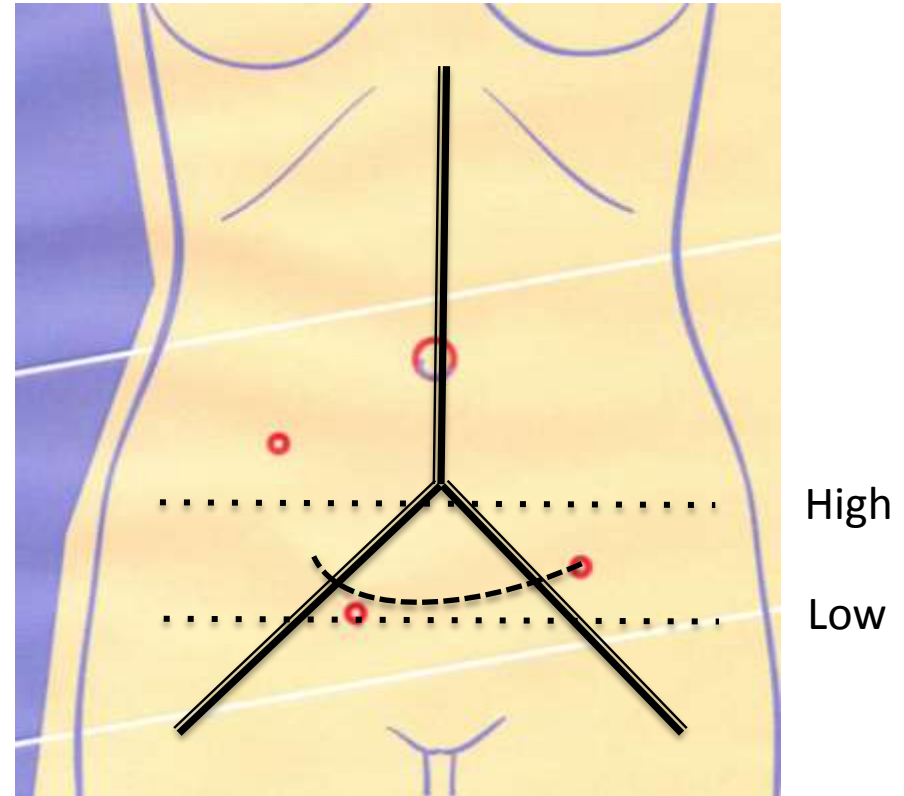
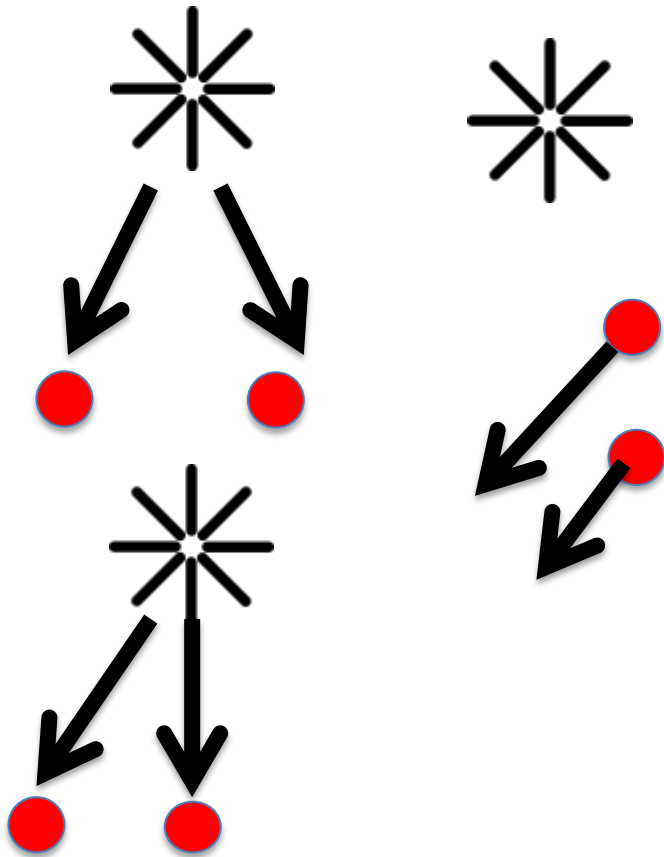


Umbilicus



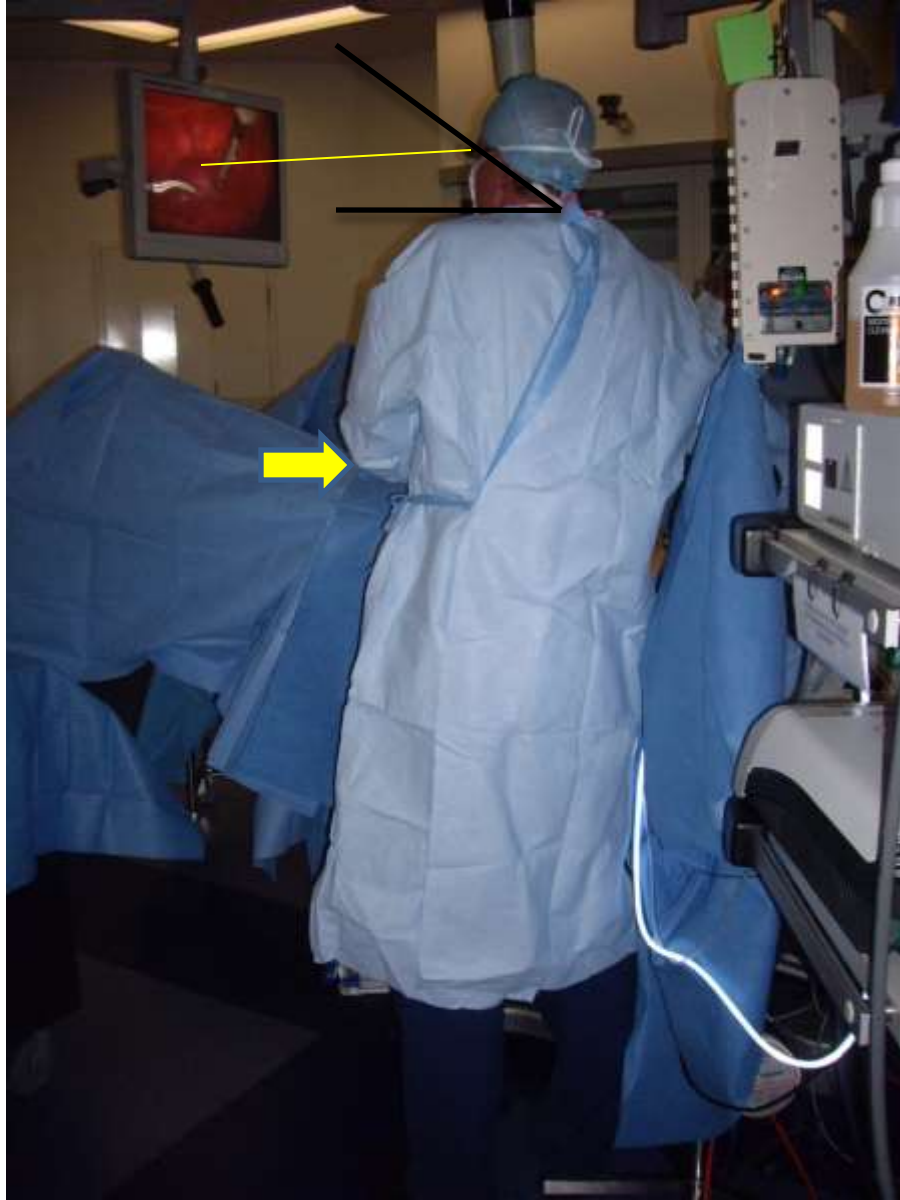
Secondary ports

1. Triangulation



2. How low/high

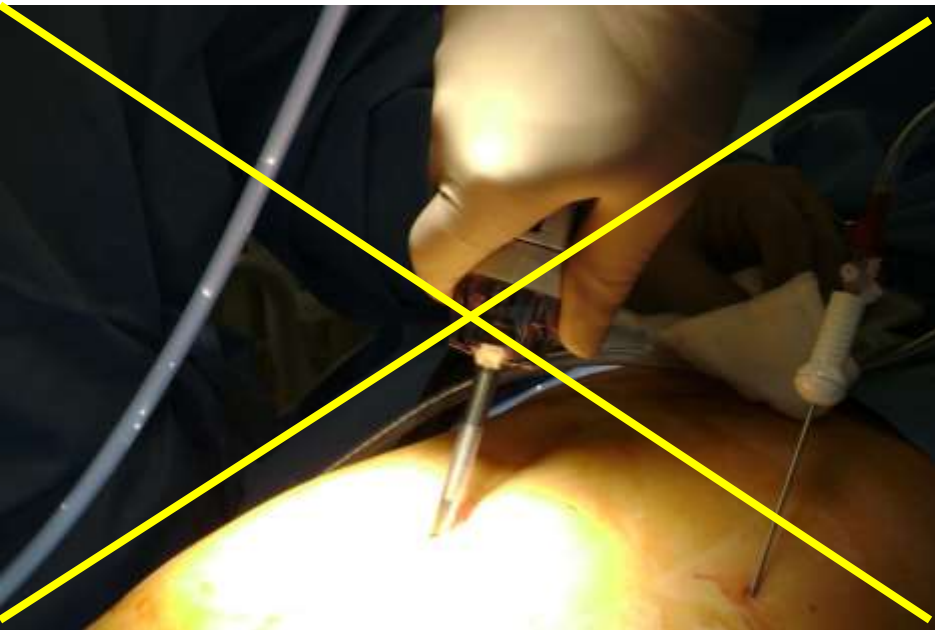
Posture of the surgeon



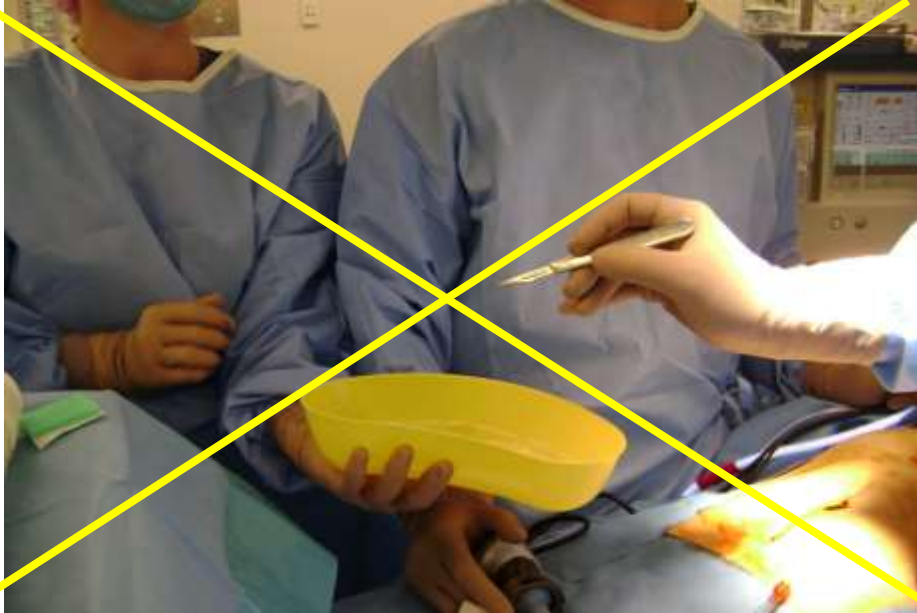
10 commandments

1. Get the set-up right every time
2. Return sharp instruments with blunt end first
3. Always operate with 2 hands: Provide your own counter-traction
4. The “hot” instrument is in the ipsilateral side (where you currently operate on)
5. Don’t operate with two “hot” instruments at the same time
 - Remove any instruments if you don’t pay attention (scope)
6. Anti fog is not a cleaner of the scope
7. Monopolar: Work in non-touch mode
8. Identify the “champagne” layer & the rim of the tube
9. Thumb points to the cleaning port of the needle holder
10. Keep your own data *www.surgicalperformance.com*

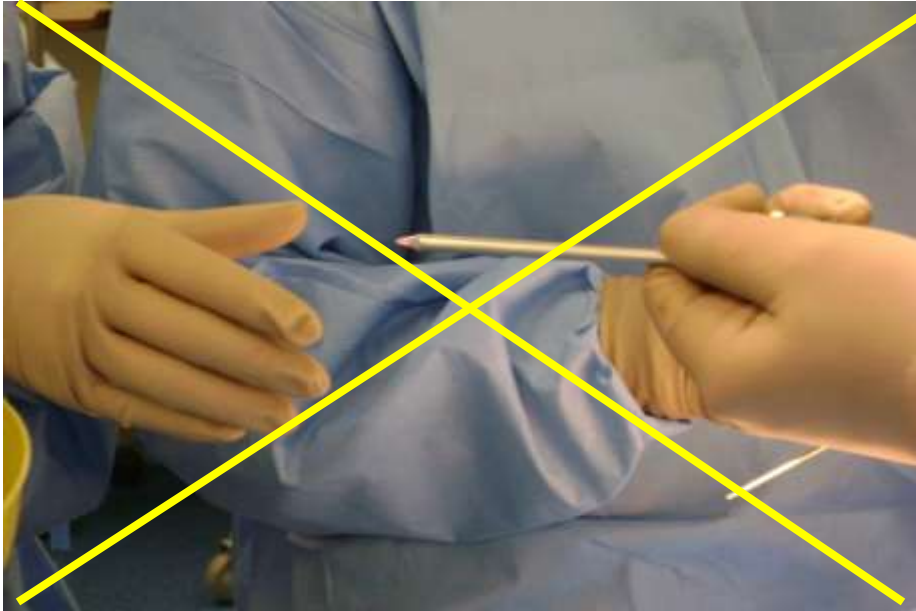
Good behaviour



Good behaviour



Good behaviour



10 commandments

1. Get the set-up right every time
2. Return sharp instruments with blunt end first
3. Always operate with 2 hands
4. Provide your own counter-traction
5. The “hot” instrument is in the side you currently operate on
6. Don’t operate with two “hot” instruments at the same time
7. Remove any instruments if you don’t pay attention (scope)
8. Anti fog is not a cleaner of the scope
9. Monopolar: Work in non-touch mode
10. Identify the “champagne” layer
11. Identify the rim of the tube
12. Thumb points to the cleaning port of the needle holder
13. Keep your own data *www.surgicalperformance.com*

The Struggle

- Waste your time
- Develop problems
- Underperform
- Not advance in surgery
- Unable to control critical situations
- Conversion rate high
- Get tired
- Enjoy surgery even less

